
CURRICULUM VITAE

Duncan Bruce (Senior Engineer)

date of birth
26 July 1976

nationality
new zealand

education
university of canterbury

qualifications
bachelor of civil engineering
MIPENZ
CPEng chartered engineer

areas of expertise
structural design
fire engineering design
civil services design

Feb 2008 - Present **Strata Group Consulting** **Engineers Ltd** **Senior Engineer**

Responsibilities include structural design, contract documentation, project management, construction supervision & site investigations

2005-2008 **Design Works HB Ltd** **Structural Engineer**

Responsibilities include structural design, project management, construction supervision & site investigations

2004-2005 **Price & Myers (London)** **Structural Engineer**

Structural Analysis and design, site supervision for numerous small to medium scale buildings included MHS Homes new headquarters, 42KHA commercial office building

2002-2004 **Holmes Consulting Group** **(HB)** **Senior Engineer**

Structural analysis and design of various buildings, site investigations and construction supervision

2001-2002 **BECA (Tauranga)** **Graduate Engineer**

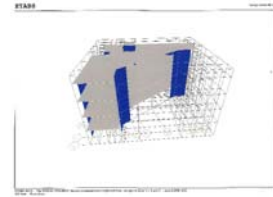
Analysis and design of numerous industrial structures at both Kawerau and Kinleith Pulp and Paper mills

MAJOR PROJECTS

Mokopeka Farmpark
Design and Contract Management for new 24 Lot Rural Farmpark subdivision in Maraetotara, HB
Est Cost \$2 million



Port Hills Road
Construction of new 4 storey office building in Christchurch from precast concrete and composite steel and concrete floors.
Est Cost 14 million



Formsteel Building Systems
Structural design of numerous industrial and commercial buildings using the Formsteel Coldformed steel framing system.
Est Cost \$0.2 - \$2 million



Porse Headquarters
New 2 storey office building constructed from a combination of steel, concrete, masonry and timber .
Est Cost \$2 million

MHS Homes new Headquarters
New 5 storey architecturally designed office block at Chatham historic dockyard, Kent, England.
Est Cost \$7 Million



42KHA, Kent, England
New 2 storey
Architecturally designed office block constructed from steel framing and concrete floors and brick cladding.
Est Cost \$4 Million



Road Bridges, Cape Kidnappers Golf Course, Haumoana
Design and construction supervision for 10# precast concrete bridges along entrance to premiere golf course.
Est Cost \$2 Million

